



MIR-254-PE

MIR

Cooled Incubators

123 L / 238 L

All-round performance

MIR Cooled Incubators are suitable for a wide range of applications. These incubators offer precise, repeatable control of programmable temperatures and lighting patterns, which are essential to biological research and environmental studies.

Repetitive Operation & Operability

Precise, repeatable control of programmable temperatures and lighting patterns. A program can be set to repeat for a minimum of one time to a maximum of 98 times or continuous repeat.

High-precision Temperature Control

Precise temperature control with a high precision microprocessor combined with a heater PID and compressor on/off system. The temperature control ranges from -10°C to $+60^{\circ}\text{C}$.

Intuitive Operation

A LCD control panel with touch keyboard displays temperature and time, and allows easy setting of parameters. Operation data can be auto-recorded and graphically displayed.



Diverse experiments

Ideal for experimentation during night time and holidays, experimentation that requires settings to be changed, micro-organism culture and preservation.



Medium dessication prevention

A DC fan is designed to be aimed obliquely upward to prevent direct air flow contacting samples. This reduces medium drying.



Wide temperature control range from -10°C to $+60^{\circ}\text{C}$

With a wide temperature range from -10°C to $+60^{\circ}\text{C}$, MIR Cooled Incubators allow a full range of precise experiments including environmental tests to micro-organism cultures and plant germination tests.

MIR Cooled Incubators



MIR-154-PE

Improved experimentation of repetitive operation and operability

Programmable operation function with microprocessor control

Combining flexible temperature (H), light on/off (L) and time control (T), a maximum 12-step plus constant operation or max. 12-step repeating operation can be programmed according to the experimentation requirements. A program can be set to repeat for a minimum of one time to a maximum of 98 times or continuous repeat. The Cooled Incubators also offer the choice of timer mode, 24-hour clock mode and timer mode to suit user experiments. Up to 10 programs can be stored for convenient retrieval and set-up of frequently run experiments. Individual programs can be combined using the join function. Constant operation mode without step operation is also available.

Energy savings

In addition to a microprocessor-controlled high efficient heater output and compressor on/off, an updated control program and low heat-emission inner chamber fan have been incorporated to allow high energy saving operation over a wider range of ambient environments.

Light timer control

On/off programmed timer control for standard equipped fluorescent light (15W x 1pc) is available. Optional light addition kit (MIR-L15) can add three more fluorescent lights into the chamber ceiling, giving approx. 3000 lux at 30cm below from the light sources.

| Model Number | | MIR-154-PE | MIR-254-PE |
|--|--------|---|------------------|
| Dimensions | | | |
| External dimensions (W x D x H) ¹⁾ | mm | 700 x 580 x 1018 | 700 x 580 x 1618 |
| Internal dimensions (W x D x H) | mm | 620 x 368 x 555 | 620 x 368 x 1088 |
| Volume | liters | 123 | 238 |
| Net weight | kg | 78 | 108 |
| Performance | | | |
| Temperature control range & fluctuation | °C | -10 ~ +60 [AT; +5 ~ +35, no load], ±0.2 with Heater PID control (SV 50), ±1.5 with Compressor control (SV 5) PID control: 7°C above AT | |
| Temperature uniformity | °C | ±0.5°C (set: 37°C, ambient temp.: 20°C, no load) | |
| Control | | | |
| Temperature sensor | | Thermistor | |
| Refrigeration | | | |
| Compressor | | 150 | 250 |
| Refrigerant* | | R-513A | R-513A |
| Refrigerant weight | g | 90 | 125 |
| Refrigerant GWP | | 631 | 631 |
| Total Refrigerant weight (CO ₂ equivalent) | t | 0.057 | 0.079 |
| Cooling method | | Forced air circulation | |
| Insulation material | | PUF | |
| Insulation thickness | mm | 40 | 40 |
| Construction | | | |
| Exterior material | | Painted steel | |
| Interior material | | SS SUS-304 | |
| Outer door | qty | 1 | |
| Outer door lock | | - | MIR-LP option |
| Reversible door | | Y | |
| Shelves | qty | 3 | 5 |
| Max. load per shelf | kg | 20 | |
| Max. total load | kg | 61 | 100 |
| Access port | qty | 1 | |
| - position | | Left side | |
| - diameter | Ø mm | 40 | |
| Interior fluorescent lamp | | 1, 15, with MIR-L15-PE ²⁾ option | |
| (R = Remote Alarm, V = Visual Alarm, B = Buzzer Alarm) | | | |
| High temperature | | V-B-R | |
| Low temperature | | V-B-R | |
| Door open | | V-B | |
| Electrical and Noise Level | | | |
| Power supply | V | 230 | |
| Frequency | Hz | 50 | |
| Noise level ³⁾ | dB(A) | 41 | 44 |
| Options | | | |
| Stacking kit | | MIR-S154SB-PW | - |
| Door padlock bracket | | MIR-LP-PW | |
| Additional illumination kit | | MIR-L15-PE | |
| Door window blanking plate | | MIR-154BP-PW | MIR-254BP-PW |

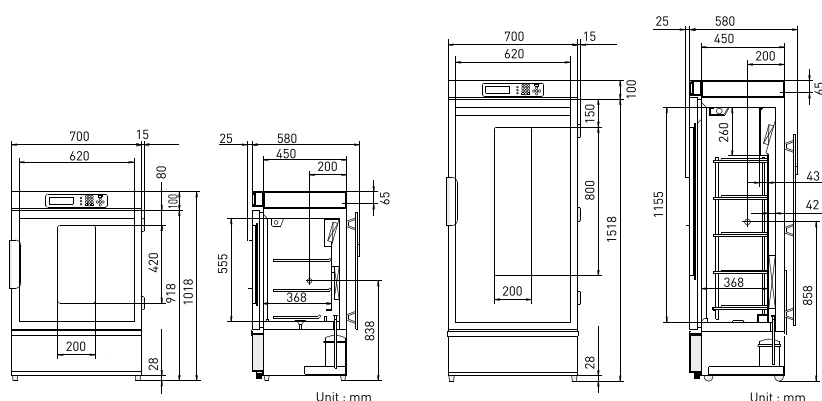
Appearance and specifications are subject to change without notice.

¹⁾ Exterior dimensions of main cabinet only, excluding handle and other external projections

²⁾ MIR-L15-PE operates between +2°C and +50°C

³⁾ Nominal value, Background noise 20dB

* Contains fluorinated greenhouse gases.



MIR-154-PE - 123 liters

MIR-254-PE - 238 liters

PHC Europe

A Member of PHC Group

Eikdonk 1 | 4825 AZ Breda | Netherlands
T: +31 (0) 76 543 3833

www.phchd.com/eu/biomedical